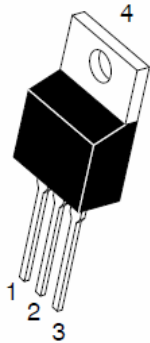
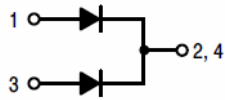


TO-220AB  
TSR / & 7



ITO-220AB  
TSR / & F



### Features

- ‡ \$GYDQWUHGQFK WHFKQRORJ\
- ‡ /RZRUZDYGWDJH GURS
- ‡ /RZRZIDRVVHV
- ‡ +LJHILFLHQF\ RSHUDWLRQ
- ‡ /HDGH)HLQLVK &RPSOLDQW

### Applications

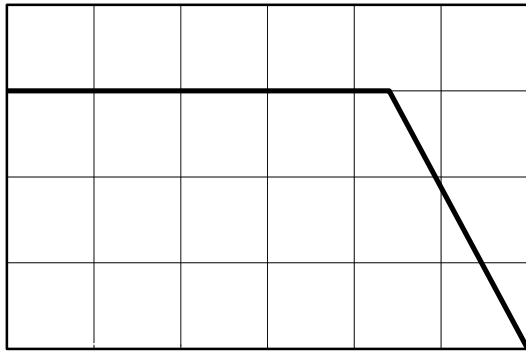
- ‡ '&' & RQYHUWHUV
- ‡ \$&' & GDSWRUV
- ‡ 6ZLWFKRQHSXSSOLHV
- ‡ )UHHZKH'HLQGHV

Maximum ratings and electrical characteristics (T<sub>J</sub> = 25°C unless

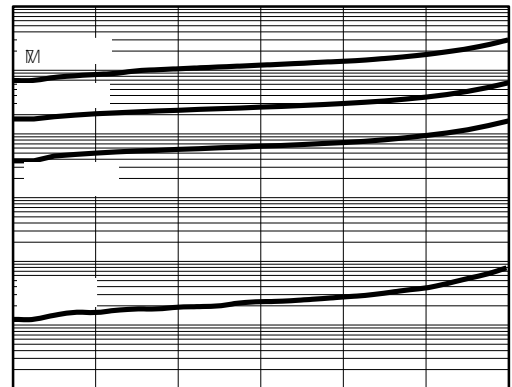
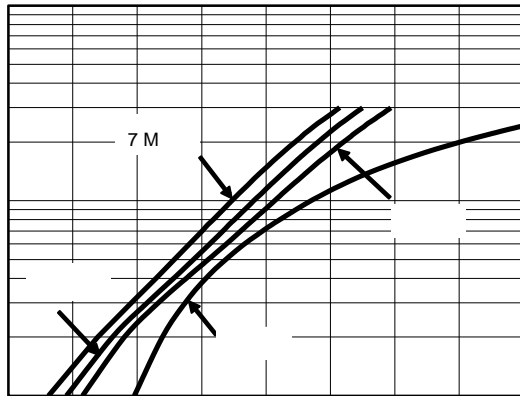
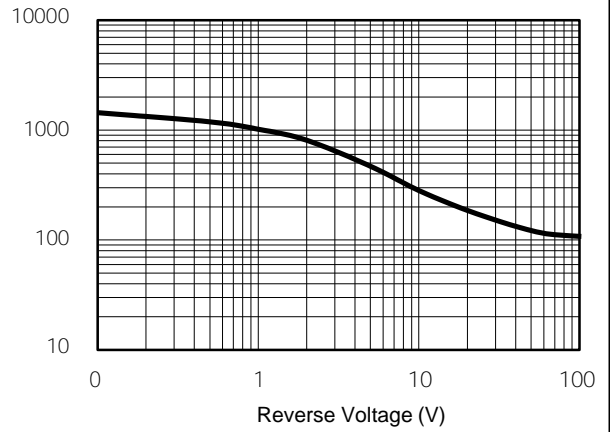


RATINGS AND CHARACTERISTICS CURVES 7\$

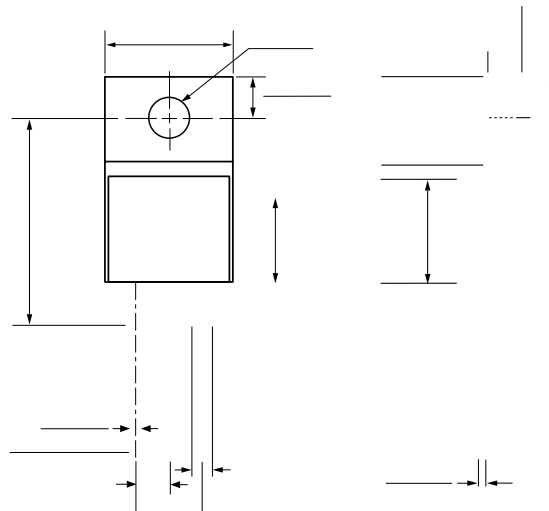
f & XQOHVQRWKBUZLVH



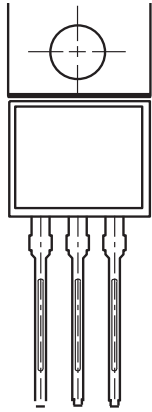
F&VPS R&



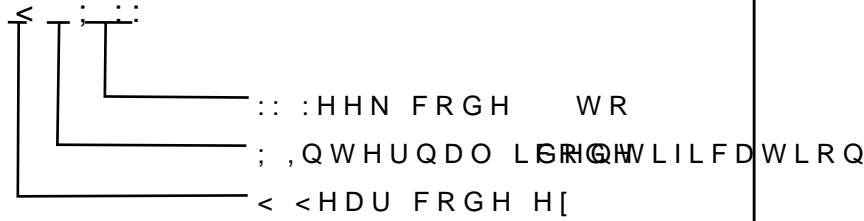
# PACKAGE OUTLINE DIMENSIONS



### Marking Information

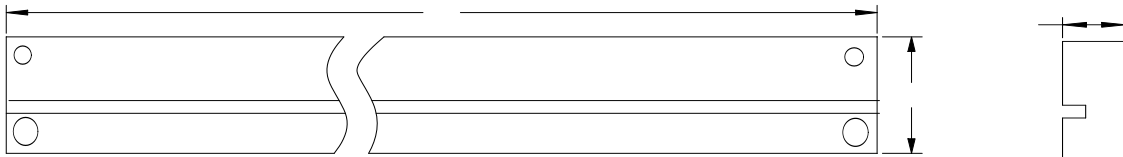


: &RPSDQ\ V WUDGHPDUN  
 3URGXFW 765 &7) RU 765 &7)  
 3'& LQIRUPDWLRQ



### Packaging Information

7XEH 'LPHQVLRQV



,QVLGH %R[

2XWVLGH %R[

### Packaging Information

| 12   | 81, | 7XEH 'LPHQVLRQV  |   |   | ,QVLGH %R[                  |   |   | 2XWVLGH %R[      |   |   |
|------|-----|------------------|---|---|-----------------------------|---|---|------------------|---|---|
| 6LH  | PP  | \$               | % | & | /                           | : | + | /                | : | + |
| 47<  | 3&6 | 3&6 7XEH         |   |   | 6PDO SHFWDJH3&6<br>WXEWRWDO |   |   | 3&6 FDUERGLWRWDO |   |   |
| 1RWH |     | 7ROHUDQFH PP" PP |   |   | PP" PP                      |   |   | PP" PP           |   |   |